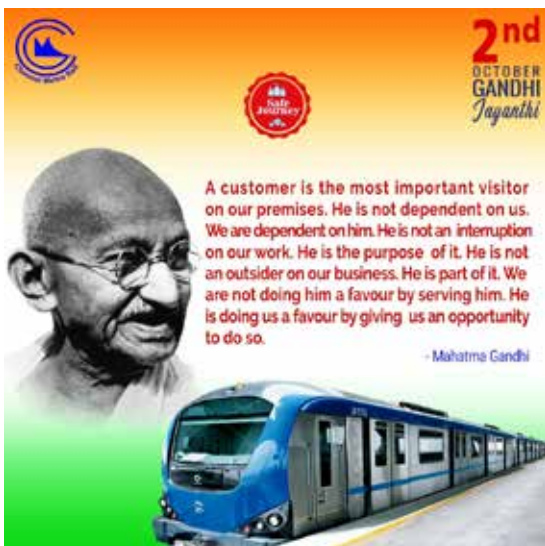


## Anna Subway at Government Estate Entry B opened for Public Use

As part of Multi Modal Integration initiatives, the old Anna Subway near the Chennai Metro Rail's Government Estate Underground Metro Station was renovated and opened for the benefit of public and passengers. The old Anna Subway which is one of the biggest subways in Chennai is located beneath Arignar Anna Statue.

The subway has now been renovated to blend with the aesthetics of the surrounding Metro entry structures with ACP cladding, Granite flooring, wall tiling, new lighting and Designer GFRC Jalli works. The subway has direct connectivity to the Government Estate Underground Metro Station Concourse Level and provides convenient access to the station for the benefit of public and passengers from Wallajah Road, Ellis Road, Blacker's Road and Anna Salai.

The subway also connects to the iconic Khadi Bhavan and Tamil Nadu Government Multi Super Specialty Hospital at Omandurar Government Estate. Adequate signages have also been installed at the entries and inside the subway to guide passengers to the Metro Station.



### CHAIRMAN

THIRU. DURGA SHANKER MISHRA, I.A.S.,  
SECRETARY  
MINISTRY OF HOUSING & URBAN AFFAIRS  
GOVT. OF INDIA

### MANAGING DIRECTOR

THIRU. PRADEEP YADAV, I.A.S.,  
MANAGING DIRECTOR  
CHENNAI METRO RAIL LIMITED

## *Electric Bikes introduced at Thirumangalam, Vadapalani and Alandur Metro Stations*

**A**s part of providing several multi-modal integration facilities to passengers, Chennai Metro Rail Limited in association with Howdy Hire Bikes, a two wheeler rental start-up have launched a fleet of electric two wheelers at Thirumangalam, Vadapalani and Alandur Metro Stations.



Howdy electric two wheelers can be utilised by passengers using their “Howdy Hire Bikes” Mobile App and select their pick up hub and drop hub to reserve a scooter. Once done, passenger can scan the QR code of the bike to lock/unlock/start/pause ride from the mobile application itself. Once the ride is completed, the passenger can drop it at any hub close to their destination. The hub will be available at every 500 metres within Chennai. The charges are Rs.3 per kilometre and 10 paise per minute. The first ride is absolutely free with a 50% discount on the next 5 rides.

These bikes are provided with a double layer protection for the safety of passengers;

1. They are coated with a certified “Anti - Microbial” solution that provides protection against Droplet based virus.
2. The bikes and helmets are sanitized after each and every ride.

Based on the response from public, this facility will be made available at more number of Chennai Metro Stations.

## *Foot Operated Lift Mechanism and Foot Operated Buttons for Restroom Taps Installed*

**C**MRL in its endeavour to provide safety to the passengers, initiated the process of studying various contactless optional measures for the safe usage of its elevators. Now, CMRL has come with an ingenious way to avoid and minimise hand contact with the elevator buttons by providing foot-operated lift mechanism so as to reduce the virus spread and ensure safety of the users.

This foot-operated mechanism is one of a kind prototype and CMRL takes the lead to be the first Metro Rail in India to implement this mechanism – initially in its Administration Building at Koyambedu Depot during May 2020 on a trial basis.

Based on the positive impact, CMRL has installed the foot-operated lift mechanism in all its 32 Metro Stations to facilitate the passengers, in particular, and the public, in general.



In addition to the above, CMRL in its unstinted effort to curb the spread of COVID-19, has also installed Foot-Operated Buttons to the Water Taps in all 190 Restrooms at all 32 Metro Stations to encourage contact-less usage for the safety of passengers.

## Over 3.60 lakh passengers travelled in Chennai Metro Train till September 30, 2020

Chennai Metro Rail services resumed in a graded manner in the Blue Line between Airport to Washermenpet from 07-09-2020 and Green Line between St. Thomas Mount and Puratchi Thalaivar Dr. M. G. Ramachandran Central Metro via Koyambedu on 09-09-2020.

A total of 3,60,193 passengers have travelled in the Metro Train from 07.09.2020 to 30.09.2020. On 30.09.2020 a total of 22,065 passengers have used the Metro Train to commute. A total of 13,044 passengers have utilised the recently launched QR code ticketing system. While 70,009 passengers have used Travel Card Ticketing System.

CMRL offers a 20% discount on QR Code ticketing namely Single Journey Q.R Ticket, Return Journey Q.R Ticket, Group Q.R Ticket and Q.R Trip passes from 11-09-2020. 10% discount is already available for passengers using Travel Cards. All the Entrance gates at all Metro Stations have been opened for Public use considering the convenience and welfare of Public and Chennai Metro Rail Passengers. Also, all the facilities inside the Metro Stations such as Lifts, Escalators and Subways connecting the Entrance of Metro Stations are also being opened to benefit the Public and Metro Rail Passengers. CMRL requests all its passengers to co-operate



with CMRL security, Ticketing and other staff for a safe and smooth travel and also in its effort to prevent the spread of COVID-19 by maintaining social distancing.

## Chennai Metro operates early morning trains in the wake of UPSC exam

In order to facilitate the candidates who appeared for UPSC exam on October 04, 2020. CMRL operated its Metro Train Services from 6 am instead of 7 am on October 04, 2020 only.

## Arrangements at Metro Stations

- Face masks are mandatory at all times in CMRL premises.
- Thermal Scanning of all Passengers at Entry level is being conducted.
- Symptomatic passengers or those having high temperature are not allowed to use Metro Train Services.
- Social distancing sticker markings are placed at all Passenger moving / waiting areas at Station premises. The passengers are insisted to follow these markings.
- Face Mask & Shield, Gloves and Medical PPE etc. have been arranged for frontline passenger handling staff.
- All Entrances of Metro Stations have been opened for passenger benefit
- Contactless frisking of passengers are being undertaken.
- Every passenger is advised to sanitize his/her hands by hand sanitizers provided at the entrance of stations.
- Lifts are shared only with 2 to 3 persons at a time and usage of lifts is being encouraged for aged and persons with disabilities only.
- Passengers are advised to stand on alternate steps in the escalators to maintain social distancing.
- Foot press / contactless dispenser with hand sanitizer is arranged at the entry for all passengers.
- Baggages are being scanned in Baggage Scanner and Passenger are informed to pass through DFMD (Door Frame Metal Detectors) for contactless screening.
- In order to ensure safety of passengers, Air-Conditioning in trains and stations are running with the protocols prescribed by CPWD / ISHRAE (Indian Society for Refrigeration and Air-Conditioning) so that passengers should not have any apprehension about safety.
- Passengers are encouraged to use Aarogya Setu App at the time of entry into the station.
- Passengers are advised to travel with minimum baggage and avoid metallic items.
- All human contact areas, lift buttons, escalators hand rails, customer handling points are being disinfected frequently at stations.
- Special attention has been provided to frequent cleaning and disinfecting of Public toilets at the Metro Stations.
- Parking is made available at Metro Stations with parking space.
- Shops/Kiosks/Food Points at Metro Stations are being permitted to function as per the guidelines stipulated by Government of Tamil Nadu.
- Regular pre-recorded announcements on social distancing and safe travel are being played in both stations and trains for creating awareness amongst passengers.
- Social distancing is also monitored through CCTV at all stations and inside trains.
- Several cleaning and sanitization activities are being conducted regularly at all Metro Stations and Metro Trains for the safety and security of the passengers.



## Construction Works of Metro Rail Phase-I Extension Project in Full Swing

**C**hennai Metro Rail Limited is a mass rapid transport system introduced for the first time in Chennai, Tamil Nadu as a quick and safe mode of transportation to Chennai Public.

CMRL Phase-I project which had commenced in June 2009 and has thus been successfully implemented the operation of Metro Train Services for 45.10 km.

In addition to the Phase-I of the Chennai Metro Rail Project, Phase-I Extension for a length of 9.051 km comprising 2.379 km of underground section from Washermenpet to Tondiarpet and 6.672 km elevated viaduct section from Tondiarpet to Wimco Nagar is being implemented.

The Construction works for Phase-I Extension of Metro Rail Project is in full swing. Considering the safe and swift construction of the elevated viaduct at congested area involving traffic and public movements, a new technology of Launching Girder for launching the Precast "U" Girder erection the first of its kind to be introduced in India has been successfully completed in the elevated construction works which covers both viaduct and metro stations namely, New Washermenpet Metro, Tollgate Metro, Kaladipet Metro, Thiruvottiyur Theradi Metro, Thiruvottiyur Metro, and Wimco Nagar Metro.



Thiruvottiyur



Wimco Nagar Depot Approach



Gowri Ashram (Thiruvottiyur Theradi)

This new type of Launching Girder helps in quick construction of elevated viaduct and reduction of considerable construction time.

The Launching Girder erection techniques and its launching procedures for “U” Girder erection works at elevated viaduct has been adapted for the first time in India by launching multi-span up to 25m single span of “U” Girder erection with Electric Overhead Travelling (EOT) Crane and the key features are as follows,

- Design and fabrication of complete assembly done by an Indian firm.
- With this Launching Girder, several numbers of single segment of Precast “U” girders can be erected without disturbing the public and any traffic diversions.
- Combination of this new technology of Launching Girder and extensive use of precast single segment “U” Girders helps in fast construction of elevated viaduct and drastically reduces construction time and quick handover to interface contractors.
- With this Launching Girder precast “U” Girder erection have been successfully launched with a duration of one span in 2 days with comprising maximum weight of 150 metric tonne.



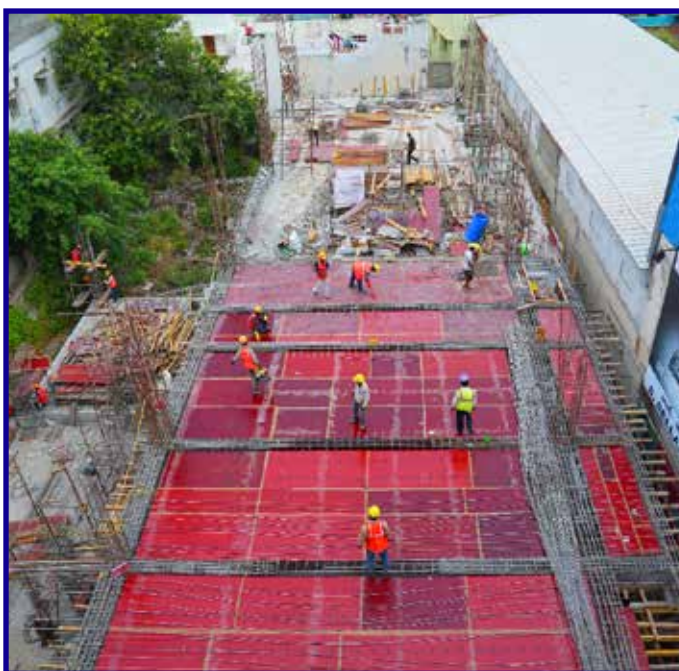
Completed Viaduct



Concourse level finishing works in progress at Wimco Nagar Metro Station



Escalator fixing work at Wimco Nagar Metro Station



Entry exit (ES2) structure concourse level work in progress at Thiruvottiyur Theradi Metro Station

# Welcome to the CMRL family



**Thiru. Rajesh Chaturvedi**  
Director (S & O)



**Thiru. Livingstone Eliazer. T**  
CGM (Project Planning  
& Design)



**Thiru. Ramasubbu.S**  
Advisor (Operations & RS)



**Thiru. Manoharan. K.A**  
Advisor (S & T)



**Thiru. Sankaramurthi. A**  
Dy. Advisor (Signal)



**Thiru. Ravindran. E**  
DGM (Architecture)



**Thiru. Arulmani. B**  
SE (Electrical)



**Thiru. Rajasekaran. B**  
Consultant (LA)



**Thiru. Govindan. M.S**  
Consultant (LA)



**Thiru. Jegannathan. R**  
JE Grade-II (Station Control)

Editor  
**S. Pandiyan**  
JD/PRO

Sub-Editor  
**Shruti Shambavi. R**  
DM (PR)

Published by:  
**Chennai Metro Rail**  
Limited

Chennai Metro Rail Limited,  
Admin Building, CMRL Depot,  
Poonamallee High Road,  
Koyambedu, Chennai – 600107