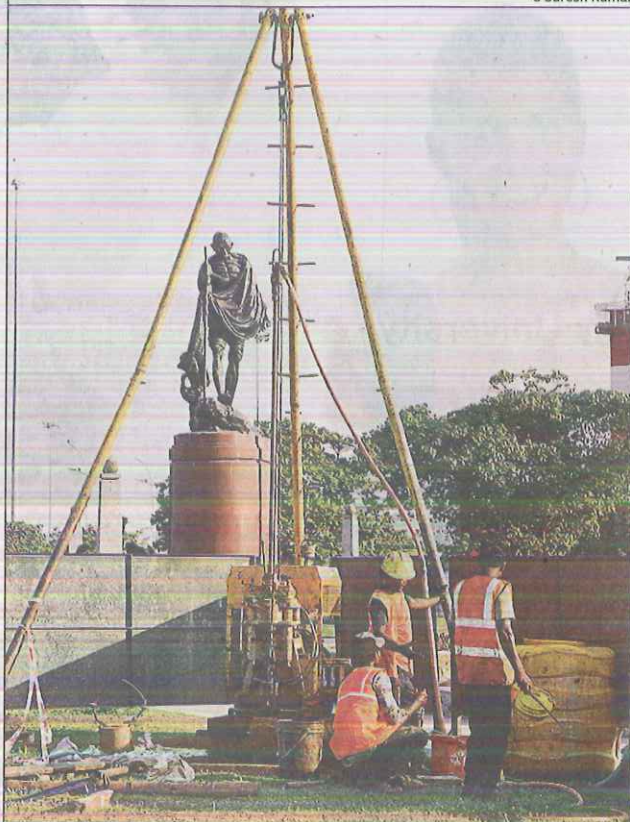


METRO ON THE MOVE

C Suresh Kumar



CONNECTING THE GRID: Chennai metro rail has started soil tests near Gandhi Statue on Kamarajar Salai on Marina prior to construction of the 26.1km Lighthouse-Poonamallee line. It is corridor 4 of phase 2 of the project. The test will help determine the soil condition to build lines and stations. Metro rail is planning to construct 118.9km lines across the city under phase 2. Similar soil tests are underway at T Nagar, Mylapore, Royapettah and others. The tests are expected to be completed in a year