

Metro: focus on St. Thomas Mount

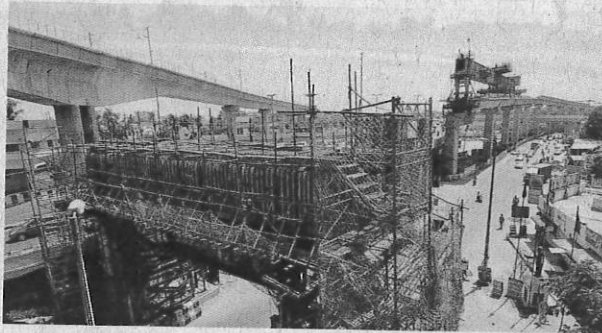
Track extension will make Ashok Nagar-Alandur a 2-way stretch

Sunitha Sekar

CHENNAI: With the first service of Chennai Metro between Koyambedu and Alandur ready to roll out anytime for public use, the Chennai Metro Rail Limited (CMRL) has now shifted the focus on laying the track up to St. Thomas Mount.

This may be of significance as completion of the track work from Alandur and St. Thomas Mount will help in making the Ashok Nagar-Alandur stretch a two way service.

If the Koyambedu- Alandur stretch is made operational now, two tracks (for onward and return service) between Koyambedu and



MUCH-AWAITED: *Of the 1.2 km track that has to be laid between Alandur and St. Thomas Mount, 600 metres has been completed* — FILE PHOTO

Ashok Nagar will function; but beyond that point, up to Alandur, the service will function only in a single track. Availability of a single

track between Ashok Nagar to Alandur means passengers may not enjoy a better frequency of trips in this stretch.

This hitch arose owing to lack of cross over facility at the Alandur station. So, if the track work up to St. Thomas Mount is complete, along with the cross over facility, then both the tracks in Ashok Nagar- Alandur stretch can function, according to the CMRL officials.

“Of the 1.2 km track that has to be laid between Alandur and St. Thomas Mount, we have finished about 600 metres. After we put in the necessary facilities in place at St. Thomas Mount, the Ashok Nagar- Alandur stretch can be made two way service,” an official said.

But it is not clear how long it may take for them to complete this work.